

4

3

2

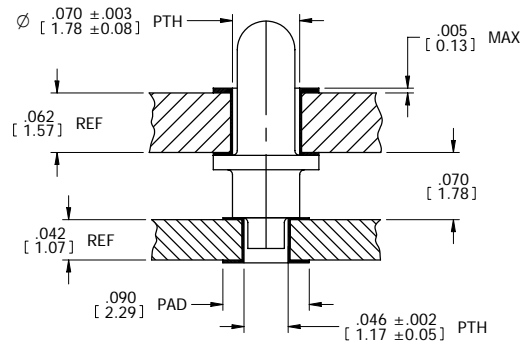
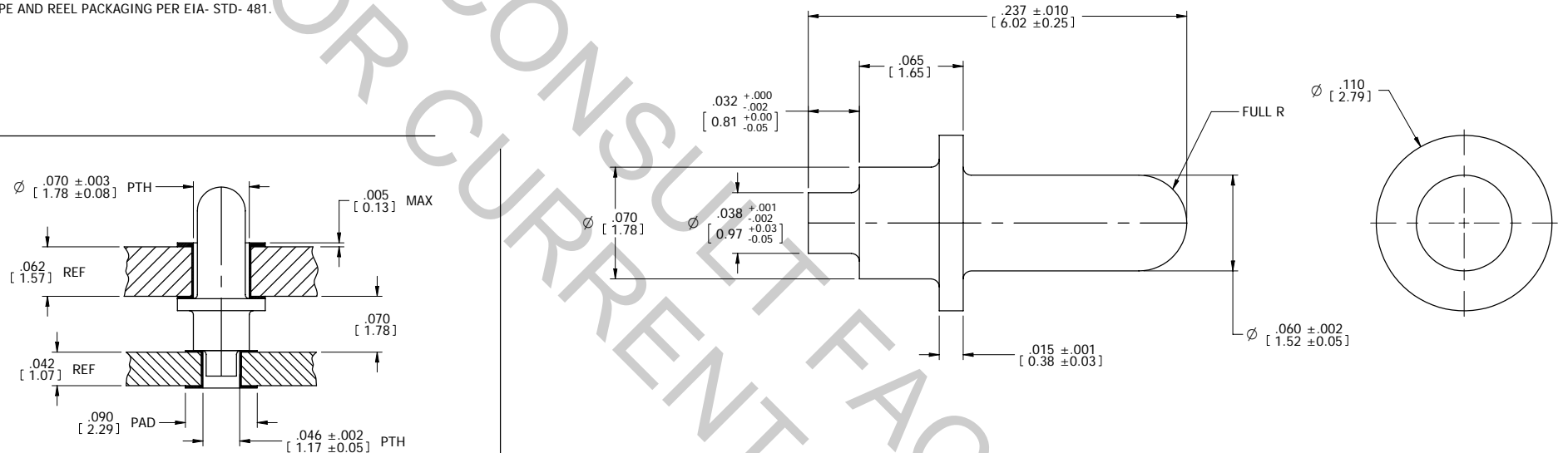
1

NOTES: UNLESS OTHERWISE SPECIFIED

1. INTERPRET DRAWING IN ACCORDANCE WITH ASME Y14.5-1994.
2. MATERIAL: C14500 COPPER, 1/2 HARD TEMPER.
3. FINISH: POST-PLATED, .000300-.000500 [7.62-12.7 MICRONS] THICK MATTE TIN (LEAD FREE) OVER .000100-.000200 [2.54-5.08 MICRONS] THICK NICKEL.
4. ALL DIMENSIONS APPLY AFTER PLATING.
5. FILLETS & RADII PERMITTED AT CORNERS, R.005 [0.13] MAX.
6. PIN SOLDERABILITY PER IPC/EIA/JEDEC J-STD-002, TEST A, CATEGORY 3.
7. TAPE AND REEL PACKAGING PER EIA- STD- 481.

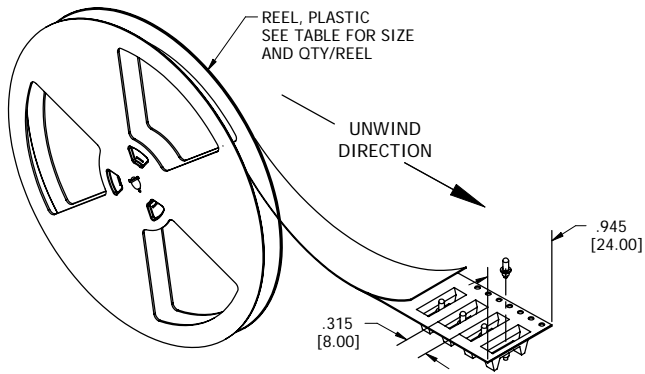
PART NO.	PACKAGING	
	REEL SIZE	REEL QTY
9-0028-04-T	22.0 [558.8]	4,000±15%
9-0028-24-T	15.0 [381.0]	1,800±15%

REV	REVISION RECORD	ECN	BY	APVD	DATE
A	INITIAL RELEASE	503487	GLT	CJ	07/28/04
B	UPDATED REEL DIA. PKG QTY & ILLUSTR.	503622	GB	GB	11/05/04
C	UPDATED PLATING TO 300-500 μm	504078	GB	GB	08/30/05
D	REVISED PER EWR 104850	504357	BILL	PVB	02/03/06
E	ADDED P/N 9-0028-24-T	504384	BILL	PVB	02/16/06



APPLICATION VIEW

TAPE AND REEL ORIENTATION



CUSTOMER DRAWING

TOLERANCES UNLESS OTHERWISE SPECIFIED DIMENSIONS IN INCHES (MILL)	DECIMAL: XX = ± .005 (X.X) = ± [0.13] .XXX = ± .003 (X.XX) = ± [0.08]	AUTOSPlice® Autosplice, Inc. 10121 Barnes Canyon Rd. San Diego, CA 92121-2725 858.535.0077	DESIGNED BY: G. Tomczak DATE: 07-15-04
	ANGULAR: ± 2°		ENGINEERED BY: G. Tomczak DATE: 07-15-04
TITLE: HYBRID PIN, Ø .060 [1.52]			
♦ DENOTES SPECIAL CHARACTERISTIC	SIZE: C DESK NO: OAE89	DRAWING NUMBER: C9-0028-[14-T	REVISION: E
SCALE: 20X PLOT NO: C9-0028-[14-T-01T MODEL NO: 9-0028-04.dwg SHEET 1 OF 1			

The drawing and the information set forth hereon are the property of Autosplice, Inc. and are to be held in trust and confidence. Publication, disclosure, or use for any purpose not expressly authorizing in writing by Autosplice, Inc. is prohibited.

4

3

2

1